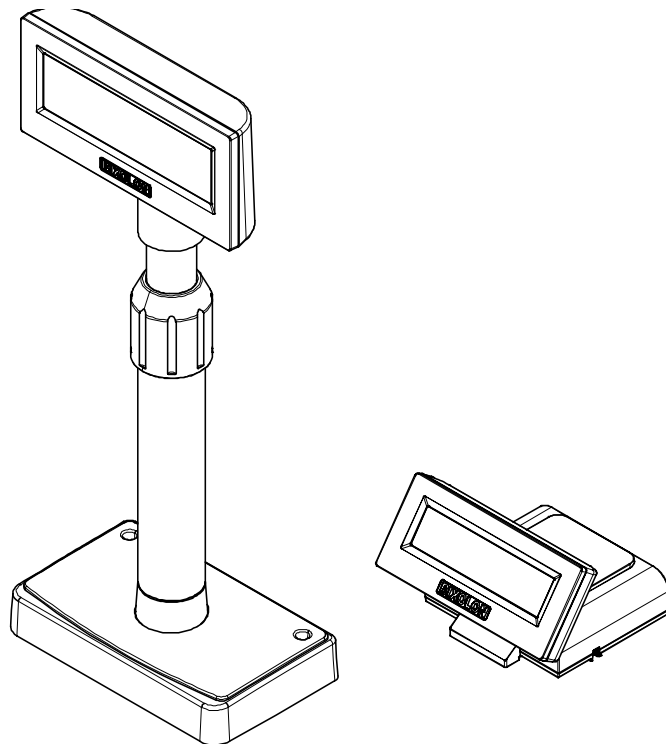




Customer Display Utility Manual

BCD-2000/3000

Customer Display
Rev. 1.00



<http://www.bixolon.com>

Introduction

The Customer Display Utility can be used for various purposes.

Details on the usage of each function are described as follows.

1) VMSM (Virtual Memory Switch Manager)

This function is used to set the virtual memory switch used for the customer display suitable for the user's environment.

2) NV Image Tool (Non-Volatile Image Tool)

This function helps you to download user-defined images to the flash memory in the customer display and to recall and display those images.

3) Font Download (Font Download Tool)

The following operating systems(OS) are supported for usage.

Microsoft Windows XP SP3 (32bit, 64bit)

Microsoft Windows Server 2003 SP1 (32bit)

Microsoft Windows Server 2003 (64bit)

Microsoft Windows VISTA (32bit, 64bit)

Microsoft Windows Server 2008 (32bit, 64bit)

Microsoft Windows Server 2008 R2 (64bit)

Microsoft Windows 7 (32bit, 64bit)

Microsoft Windows 8 (32bit, 64bit)

Microsoft Windows Server 2012 (64bit)

Microsoft Windows 10 (32bit, 64bit)

We at BIXOLON maintain ongoing efforts to enhance and upgrade the functions and quality of all our products. In following, product specifications and/or user manual content may be changed without prior notice.

Table of Contents

1. Usage Preparation.....	4
2. Customer Display Utility Usage	6
2-1 VMSM	6
2-1-1 Getting the Customer Display status (VMSM).....	7
2-1-2 Customer Display Setting (VMSM).....	8
2-2 NV Image Tool	11
2-2-1 Image List Management.....	12
2-2-2 Image Download	13
2-2-3 Image Display	14
2-3 Font Download Tool	15

1. Usage Preparation

1) Customer Display and PC Connection.

Connect the Customer Display and PC via the interface cable.

(The supported interfaces are serial and USB. USB cables are connected as USB to serial.)

2) Customer Display Utility Program Execution.

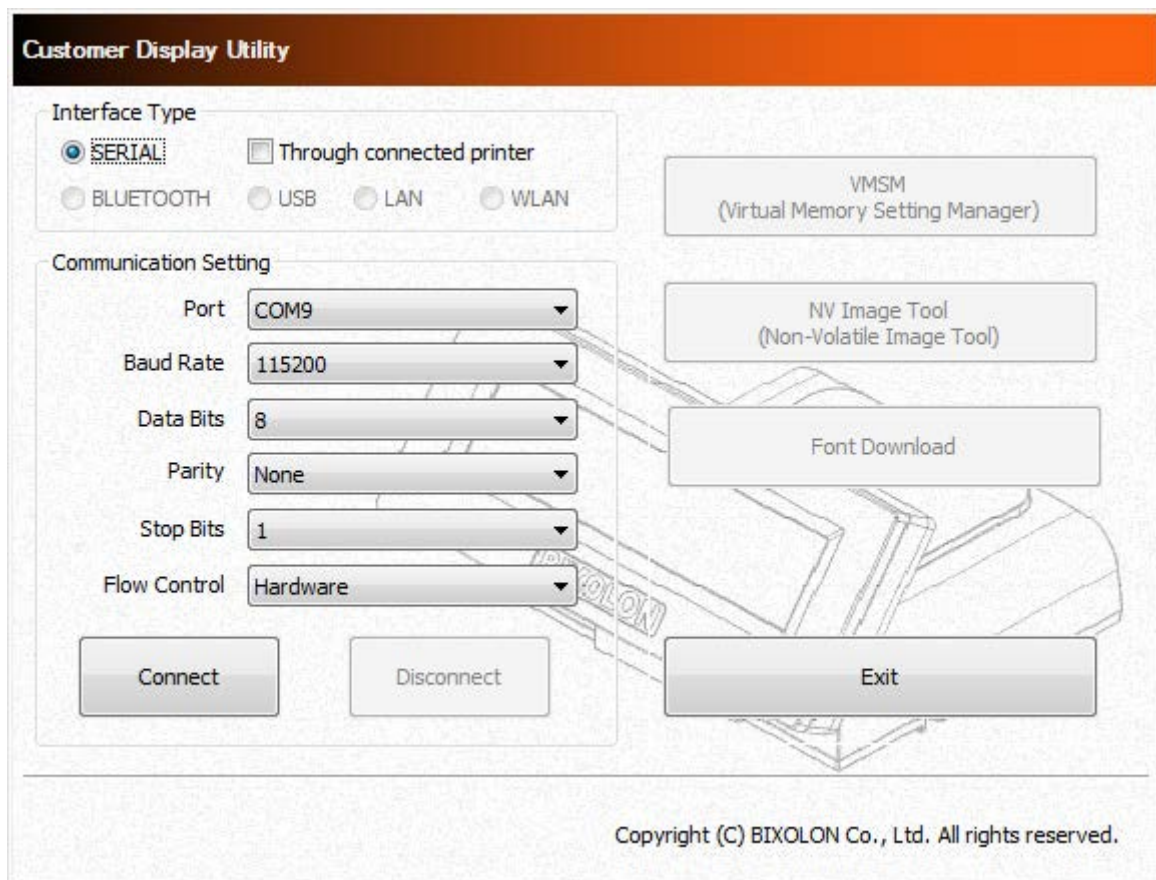
The program can be installed from the accompanying CD, and Latest file versions can be downloaded from the BIXOLON website. (<http://www.bixolon.com>)

3) Select the interface type and communication conditions.

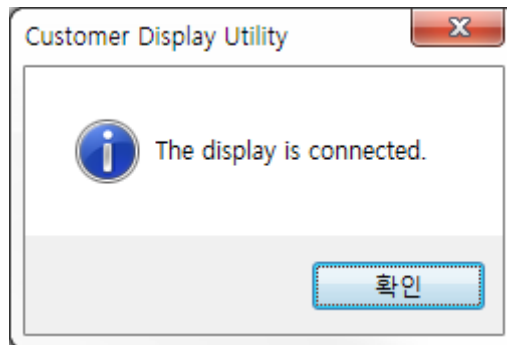
Caution or Warning

- The communication setting needs to be set as the same value which is displayed when the customer display is on.

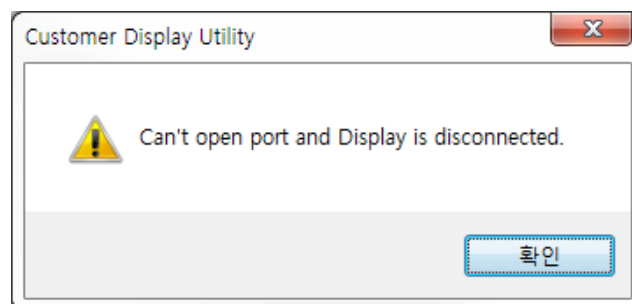
4) Click on the “Connect” Button.



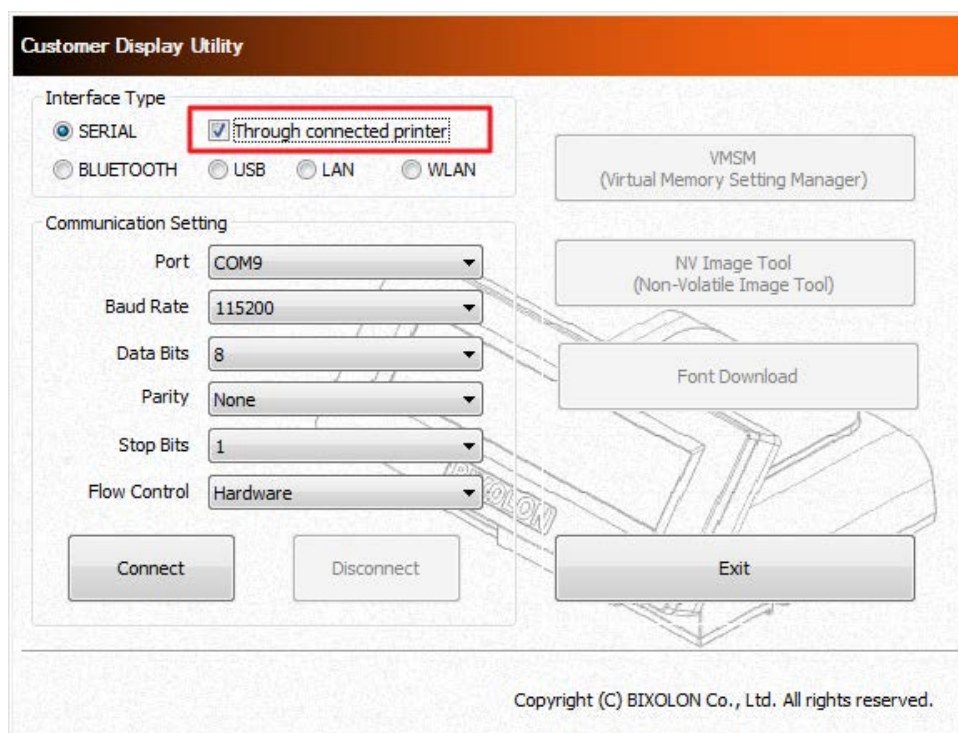
- * If the connection is successful, the inactive buttons become active with the message "The display is connected".



- * If the connection fails, the following error message appears. "Can't open port and Display is disconnected."



- * When connecting BCD-3000 via SRP-Q300/SRP-Q302 printer, select "Through connected printer" and set the interface that is used for connecting SRP-Q300/SRP-Q302 to the PC.



2. Customer Display Utility Usage

2-1 VMSM

- This function is used to set the virtual memory switch used for the Customer Display suitable for the user's environment.

* If the Communication Setting is OK, click the "VMSM" button.

Customer Display Utility

Interface Type

☒ SERIAL ☐ Through connected printer

☐ BLUETOOTH ☐ USB ☐ LAN ☐ WLAN

Communication Setting

Port: COM9

Baud Rate: 115200

Data Bits: 8

Parity: None

Stop Bits: 1

Flow Control: Hardware

Connect Disconnect

VMSM
(Virtual Memory Setting Manager)

NV Image Tool
(Non-Volatile Image Tool)

Font Download

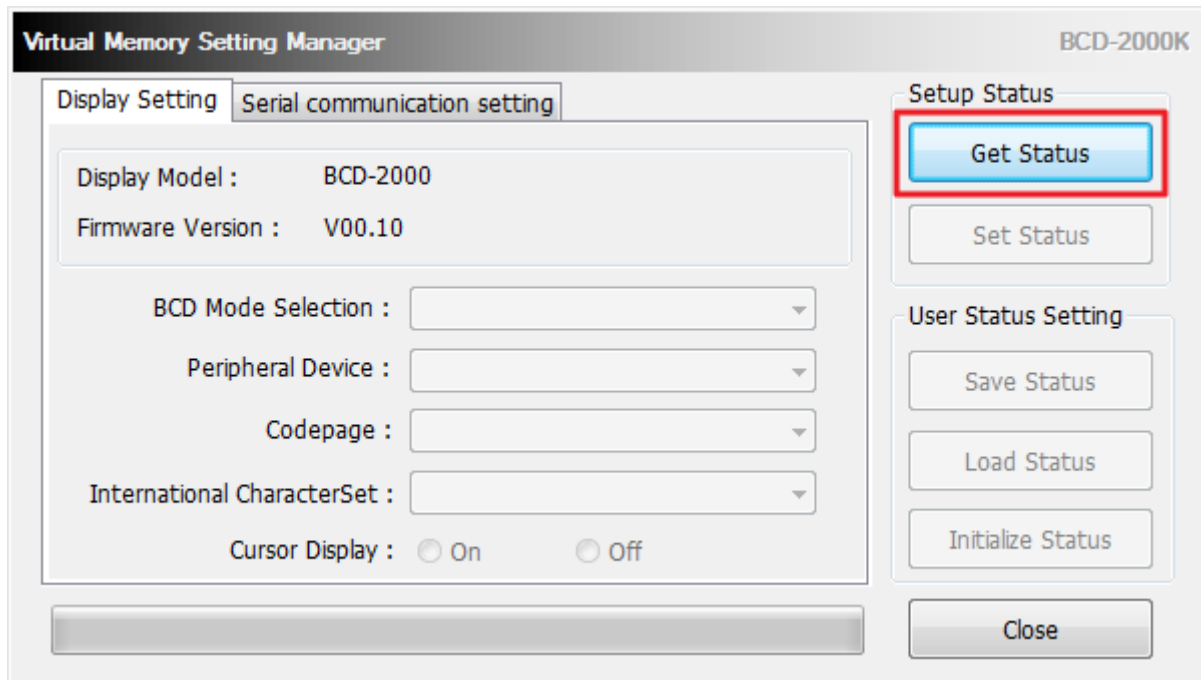
Exit

BCD-2000K

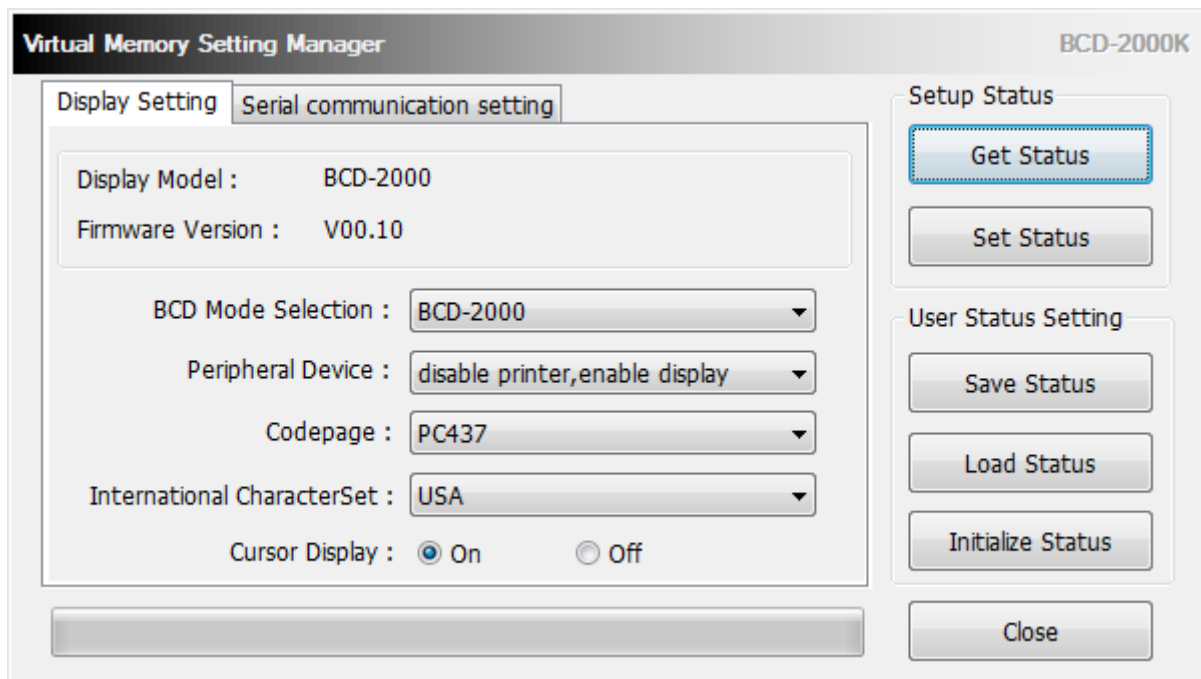
Copyright (C) BIXOLON Co., Ltd. All rights reserved.

2-1-1 Getting the Customer Display status (VMSM)

1) Click the “Get Status” button. It gets the status of the Customer Display Setting.

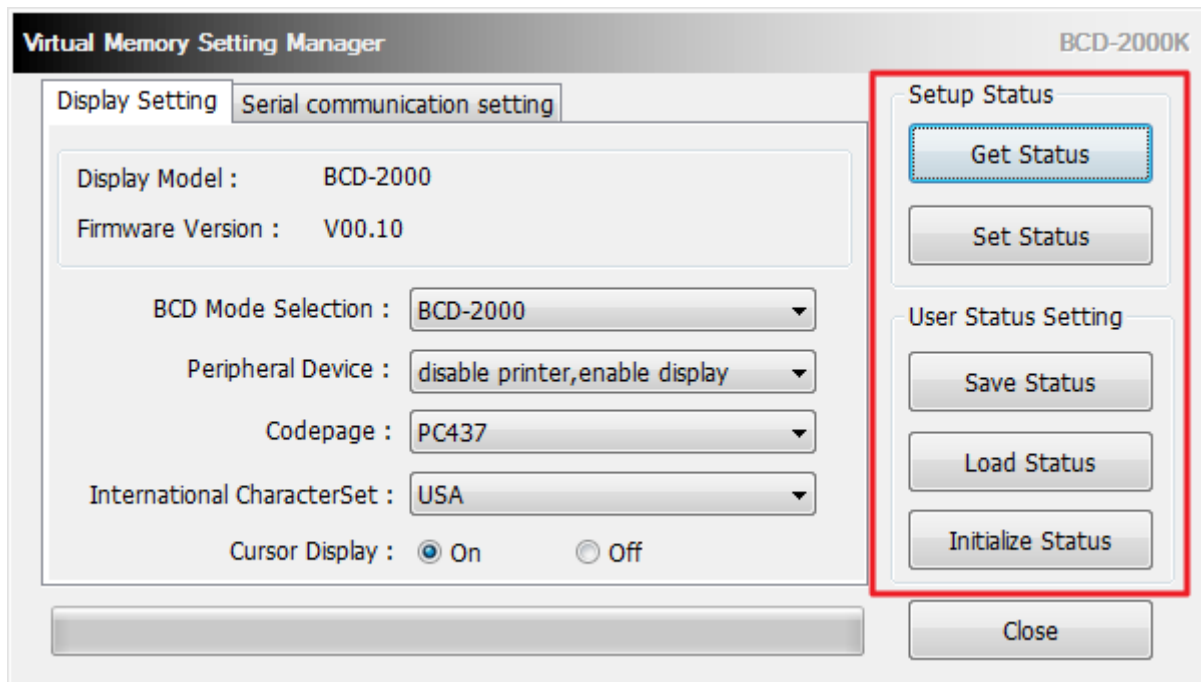


2) The “Display Setting” Tab displays Customer Display information, and current setting information, and allows new settings to be defined.

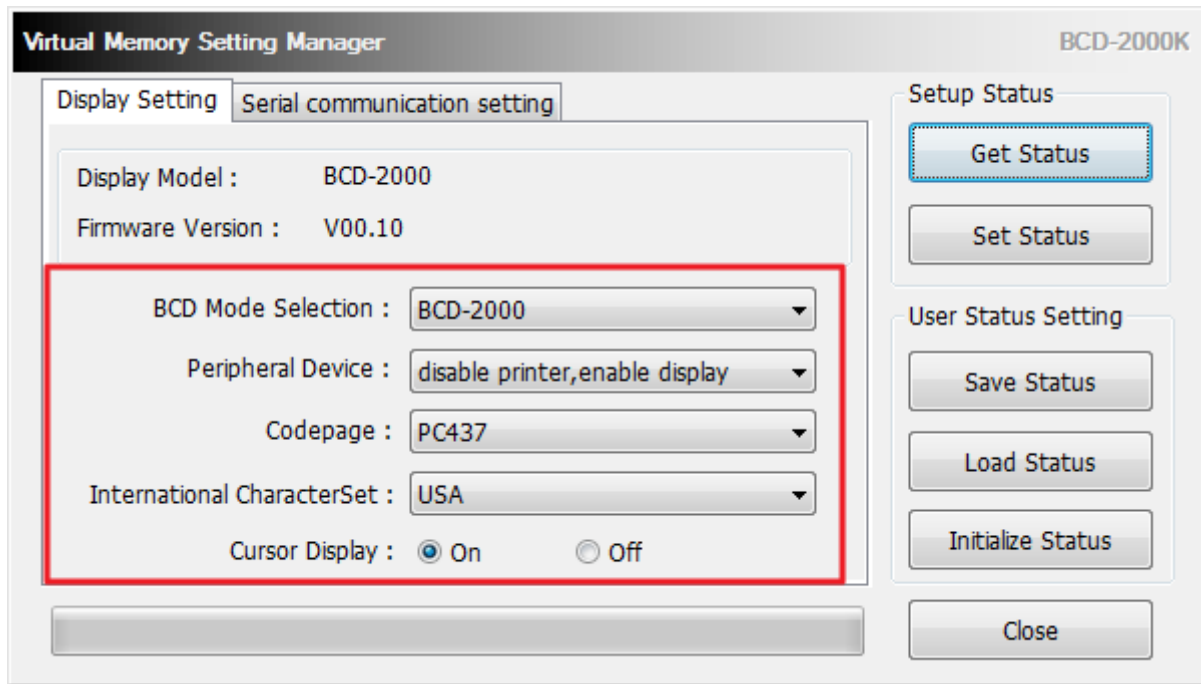


2-1-2 Customer Display Setting (VMSM)

- After getting the memory switch status of the Customer Display, the status of the Customer Display can be modified.



- 1) "Get Status"
Clicking this button displays the current settings read from the Customer Display.
- 2) "Set Status"
Clicking this button allows the user to designate settings of the Customer Display.
- 3) "Save Status"
Clicking this button saves the current settings to file.
- 4) "Load Status"
Clicking this button loads and displays the previously-saved settings file.
- 5) "Initialize Status"
Clicking this button resets the settings.



6) BCD Mode Selection(BCD-2000)

The user may select and set the BCD mode.
The default value of emulation is 'BCD-2000'

7) Peripheral Device

The user may select and set the peripheral device.
The default value of peripheral device is 'disable printer, enable display'

8) Code page

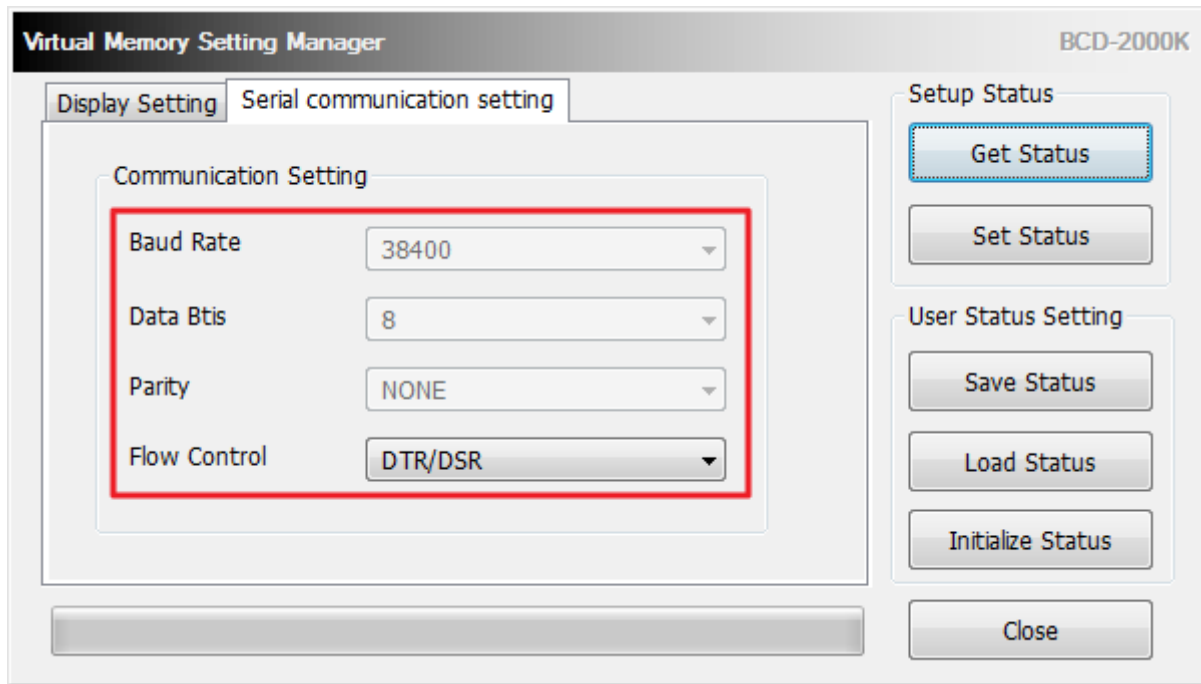
The user may select and set the code page.
The default value of code page is 'PC437'

9) International characterset

The user may select and set the international characterset.
The default value of international characterset is 'USA'

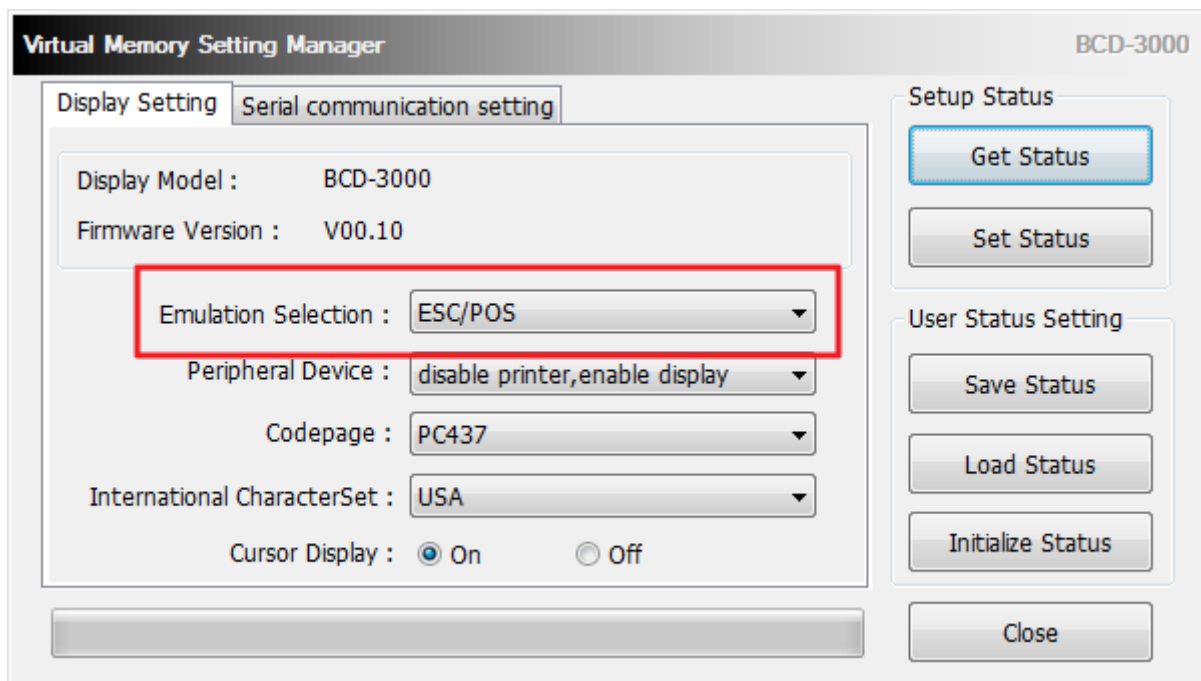
10) Cursor Display

The user may select and set the cursor display.
The default value of cursor display is 'Cursor ON'



11) Serial communication setting

It is possible to set the serial communication of the customer display. It is only possible to set Flow Control on the utility and the rest of the value should set though the dip switch. Please refer the product manual for the dip switch setting.



12) Emulation(BCD-3000)

The user may select and set the emulation.
The default value of emulation is 'ESC/POS'

2-2 NV Image Tool

- This function is used for saving and displaying images in the flash memory of the Customer Display.

* Please click "NV Image Tool" button upon connection.

Customer Display Utility

Interface Type

☒ SERIAL ☐ Through connected printer

☐ BLUETOOTH ☐ USB ☐ LAN ☐ WLAN

Communication Setting

Port: COM8

Baud Rate: 9600

Data Bits: 8

Parity: None

Stop Bits: 1

Flow Control: Hardware

Connect Disconnect

VMSM
(Virtual Memory Setting Manager)

NV Image Tool
(Non-Volatile Image Tool)

Font Download

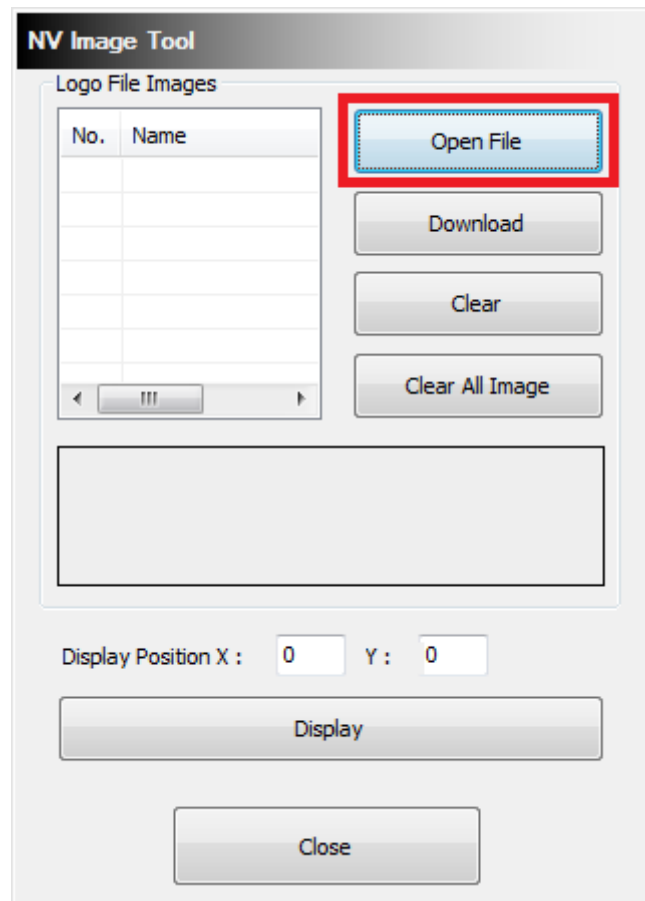
Exit

BCD-3000

Copyright (C) BIXOLON Co., Ltd. All rights reserved.

2-2-1 Image List Management

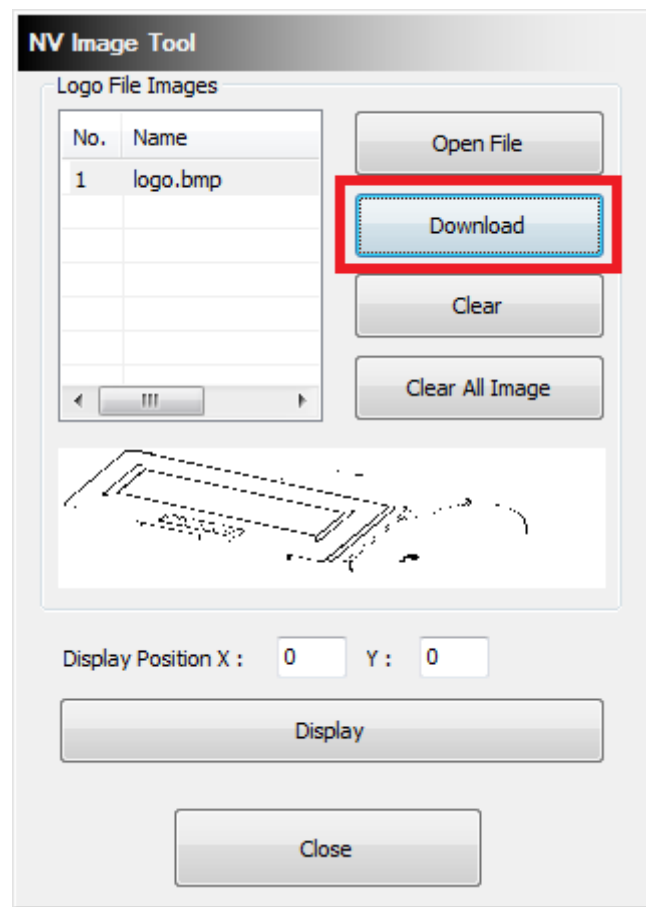
- The images can be opened, added, deleted in the Image list box using four buttons in Bitmap selection. Only bitmap format is available to download.

**Caution or Warning**

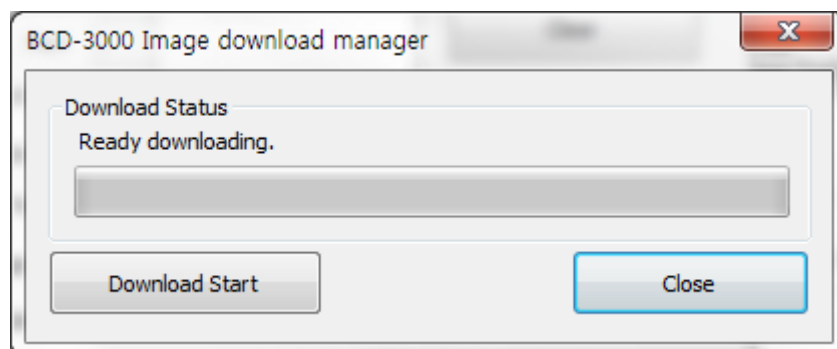
- Image download function supports bitmap only
- BCD-2000 maximum image size: 240(w) * 64(h)
- BCD-3000 maximum image size: 160(w) * 32(h)

2-2-2 Image Download

1) When the "Download" button is clicked, pop-up window.

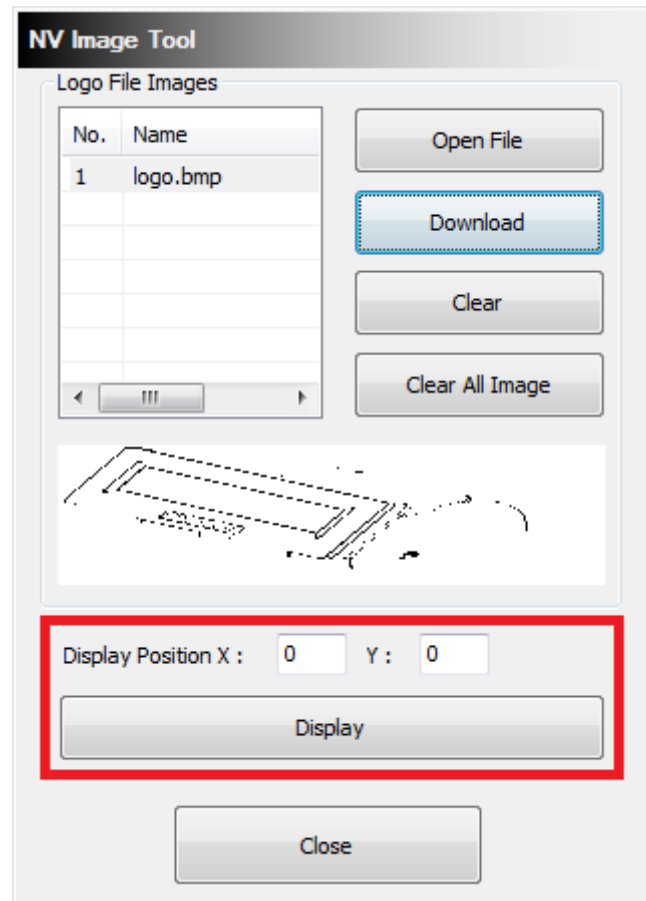


2) Download new images after all of images saved in the customer display are deleted.
The number will be assigned to "Logo File Images" in serial order.



2-2-3 Image Display

- 1) The screen will display saved images thereby using "Display" button.
- 2) It is possible to fix the coordinates of the origin for an image you output among images saved in the customer display.

**Caution or Warning**

- If the image size is bigger than specification, the image does not show on the display

[BCD-2000]

Display Position X + image width < 240

Display Position Y + image height < 64

[BCD-3000]

Display Position X + image width < 160

Display Position Y + image height < 32

2-3 Font Download Tool

- This function can be used when downloading 9*17 of BCD-2000K which is the compatible mode of BCD-2000.

Customer Display Utility

Interface Type

☒ SERIAL ☐ Through connected printer

☐ BLUETOOTH ☐ USB ☐ LAN ☐ WLAN

Communication Setting

Port: COM8

Baud Rate: 9600

Data Bits: 8

Parity: None

Stop Bits: 1

Flow Control: Hardware

Connect Disconnect

VMSM
(Virtual Memory Setting Manager)

NV Image Tool
(Non-Volatile Image Tool)

Font Download

Exit

BCD-3000

Copyright (C) BIXOLON Co., Ltd. All rights reserved.

Copyright Owned by BIXOLON

This User Manual and product are protected under copyright law.

It is strictly prohibited to copy, duplicate, translate or convert into electronic form the whole or any part of the manual and product without the prior written approval of BIXOLON.

BIXOLON maintains ongoing efforts to enhance and upgrade the functions and quality of all our products. In the following, product specifications and/or user manual content may be changed without prior notice.

The BIXOLON logo is the registered trademark of BIXOLON.

Warning - U.S.A

This equipment has been tested and found to comply with the limits for a Class A digital device pursuant to Part 15 of the FCC Rules. These limits are designed to provide reasonable protection against harmful interference when the equipment is operated in a commercial environment. This equipment generates uses, and can radiate radio frequency energy and, if not installed and used in accordance with the instruction manual, may cause harmful interference to radio communications. Operation of this equipment in a residential area is likely to cause harmful interference in which case the user will be required to correct the interference at his own expense.

Notice - Canada

This Apparatus complies with class "A" limits for radio interference as specified in the Canadian department of communications radio interference regulations. Get appareil est conforme aux normes class "A" d'interference radio tel que specifier par ministre canadien des communications dans les reglements d'interference radio.

Caution

Some semiconductor devices are easily damaged by static electricity. You should turn the printer "OFF", before you connect or remove the cables on the rear side, in order to guard the printer against the static electricity. If the printer is damaged by the static electricity, you should turn the printer "OFF".

Copyright © BIXOLON Co., Ltd. 2016-2017. All rights reserved.

Revision history

[illegible]